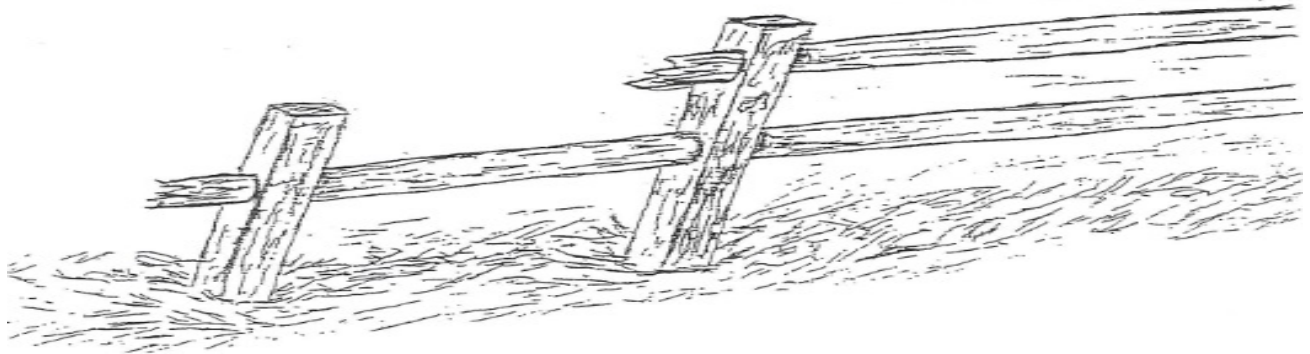




**SPLIT RAIL FENCING  
AVAILABLE TO RESIDENTS AT OUR COST**



**PRICES**

<b>2-Hole Corner Post</b>	<b>\$15.50</b>
<b>2-Hole Locust Post</b>	<b>\$14.50</b>
<b>1-Hole Corner Post</b>	<b>\$9.25</b>
<b>1-Hole Locust Post</b>	<b>\$8.50</b>
<b>11' Hardwood Rails</b>	<b>\$7.75</b>

**\*Please make sure your order quantity is correct. No returns.**

\_\_\_\_\_  
**Lessee Name**

**Please deliver to:**

**Lot #** \_\_\_\_\_ **911#** \_\_\_\_\_ **Street** \_\_\_\_\_ **Community** \_\_\_\_\_

\_\_\_\_\_ **2-Hole Corner Posts**

\_\_\_\_\_ **2-Hole Locust Posts**

\_\_\_\_\_ **1-Hole Corner Posts**

\_\_\_\_\_ **1-Hole Locust Posts**

\_\_\_\_\_ **11' Hardwood Rails**

**This will be added to your account and you will get a bill in the mail.**

**Signed:** \_\_\_\_\_

**Dated:** \_\_\_\_\_

**OFFICE USE ONLY**

LESSEE ID \_\_\_\_\_

OSAS ENTRY BY: \_\_\_\_\_

OSAS ENTRY DATE: \_\_\_\_\_